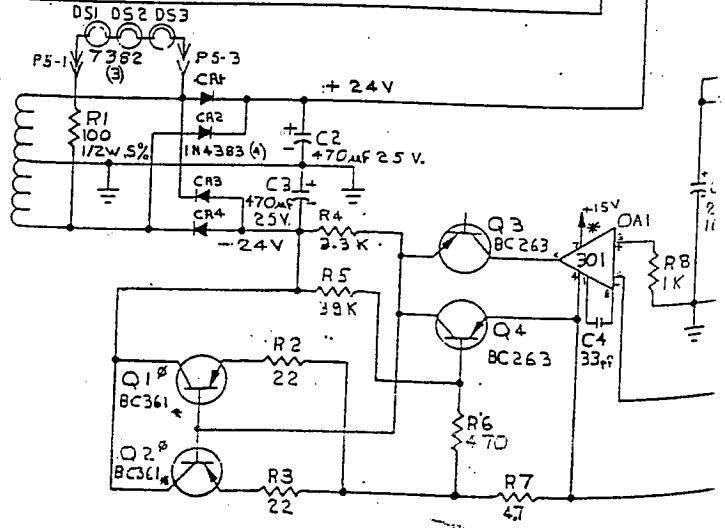
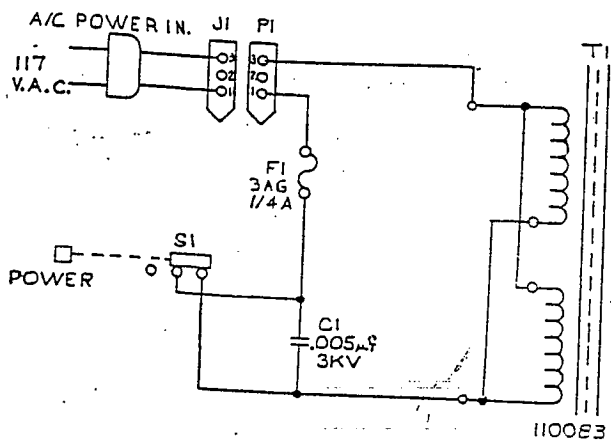
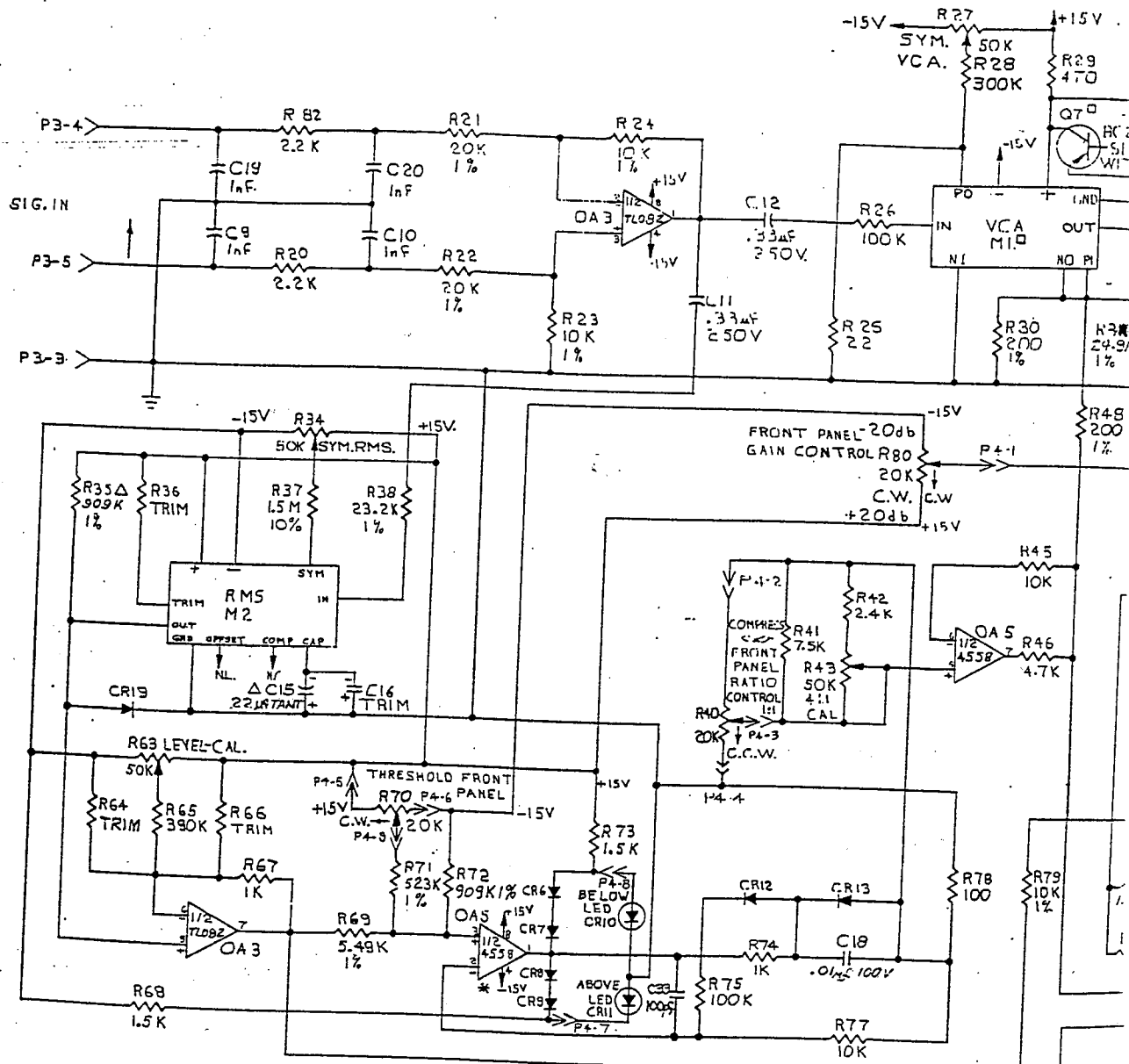
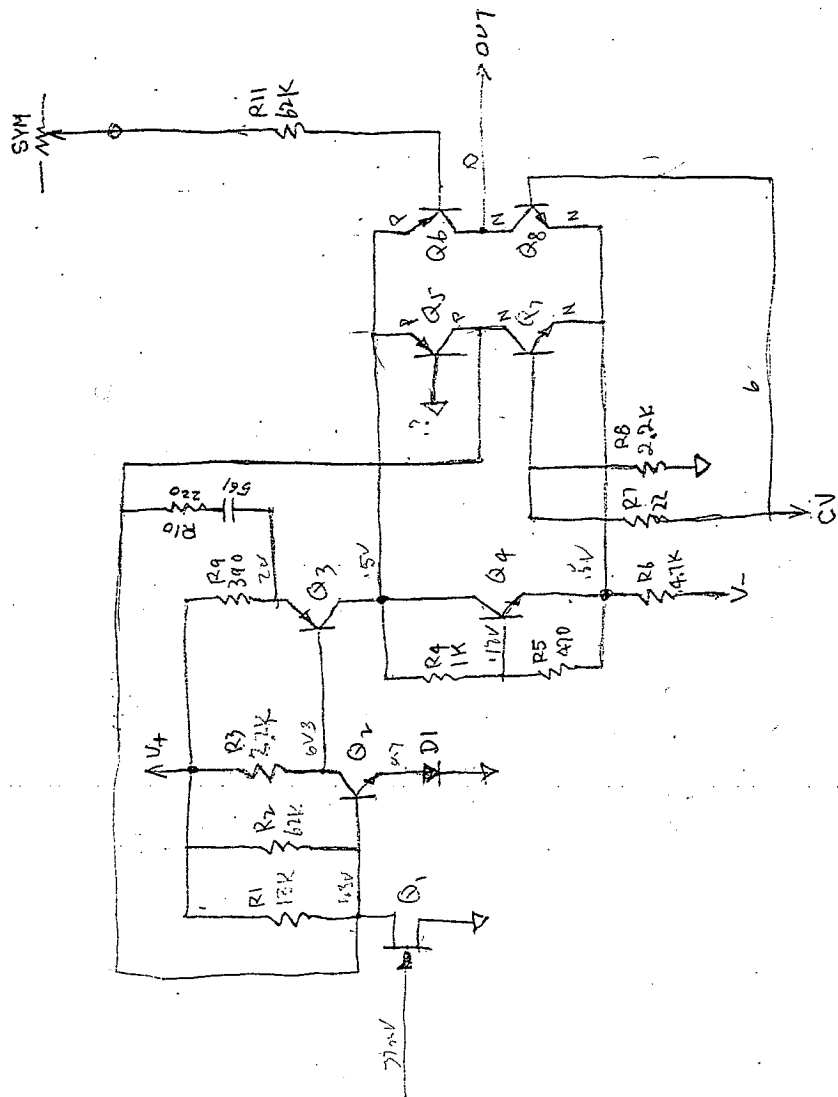


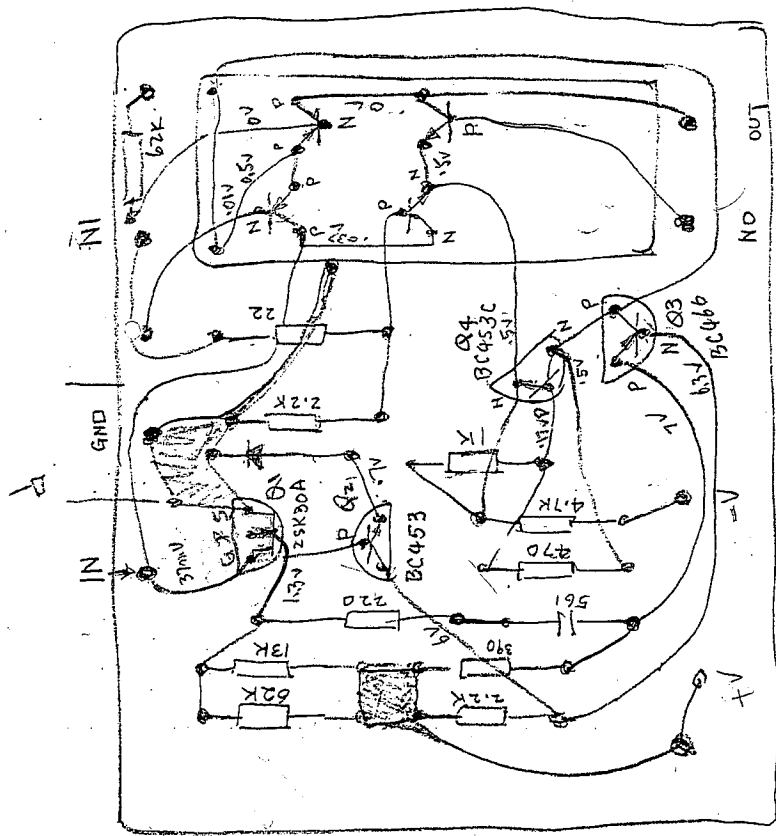
- NOTES:
- UNLESS OTHERWISE SPECIFIED:
 A. RESISTORS ARE EXPRESSED IN OHMS AND ARE 1/4W, ±5%.
 B. DIODES ARE IN4148.
 - * INDICATES HEATSINK ON DEVICE.
 - LAST REF. DESIGNATIONS: C35, CR20, S2, T1, DS3, F1, M2, OAG, P5, Q13, R103, AND V1.
 - REFERENCE ASSEMBLY DWG. # 260182.
 - Δ INDICATES TRANSIPADS ON DEVICE
 - Δ R35 AND C15 ARE MATCHED PER DWG # 164001.
 - 7.0 M16G7 ARE SELECTED PER DWG # 160017.

dbx a division of
 AKG Acoustics, Inc.
 TITLE:
 SCHEMATIC
 160 COMPLIMITER





VCA 7.6
(160)



COMP SIDE



VCA 7.6
(160)

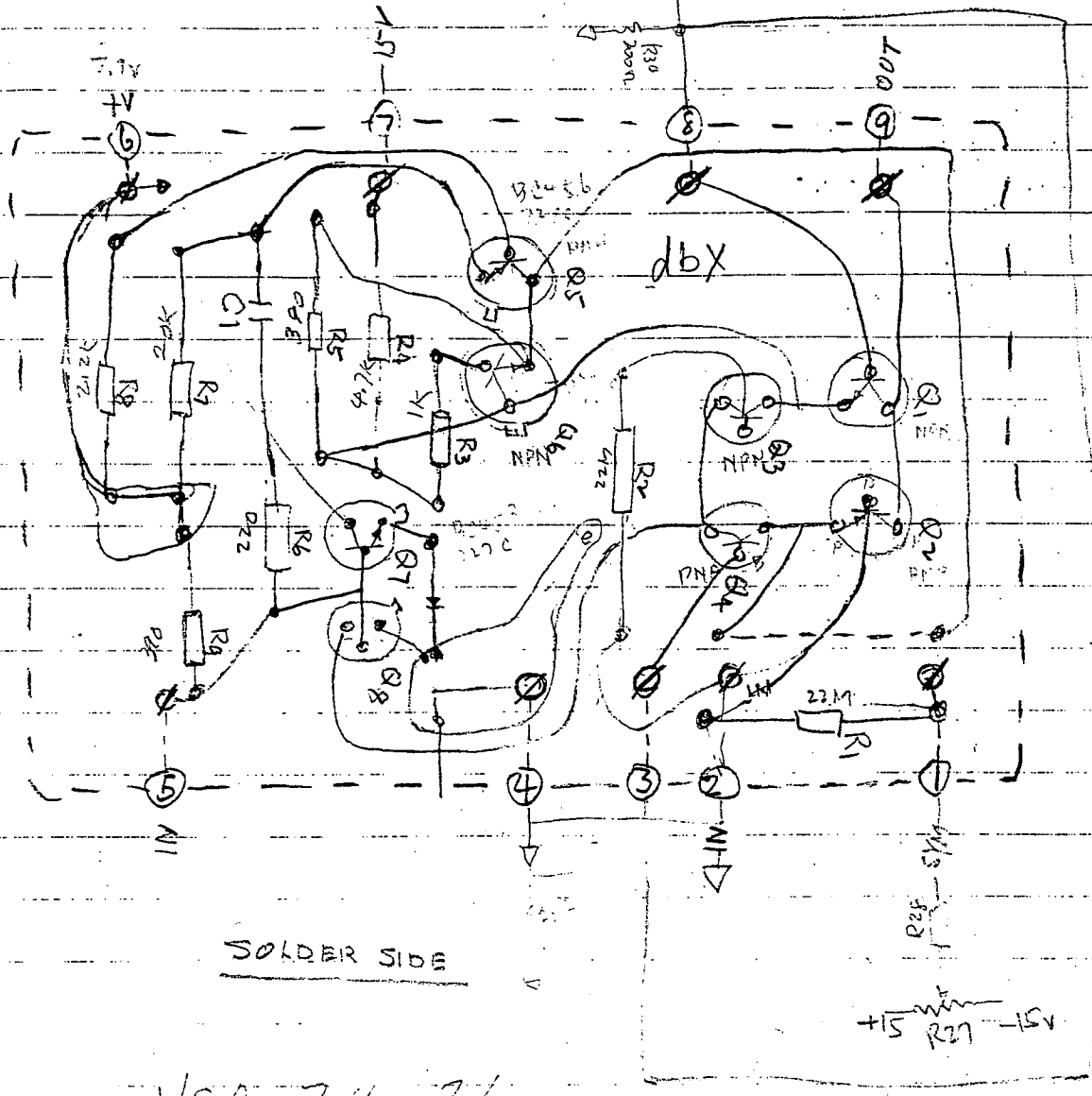
3.0612
25092

Q8
7610

Q5
2N3964

Q3
02709
7610

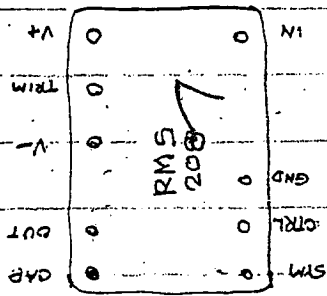
Q6
ITT 549
BC109C



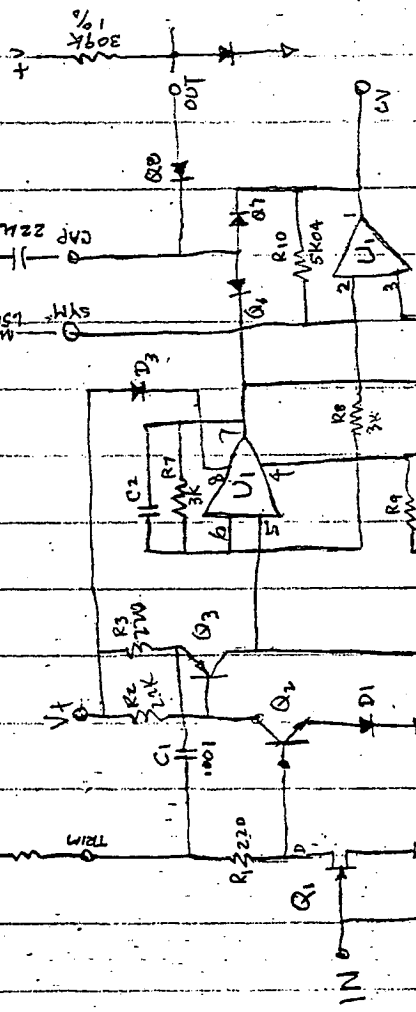
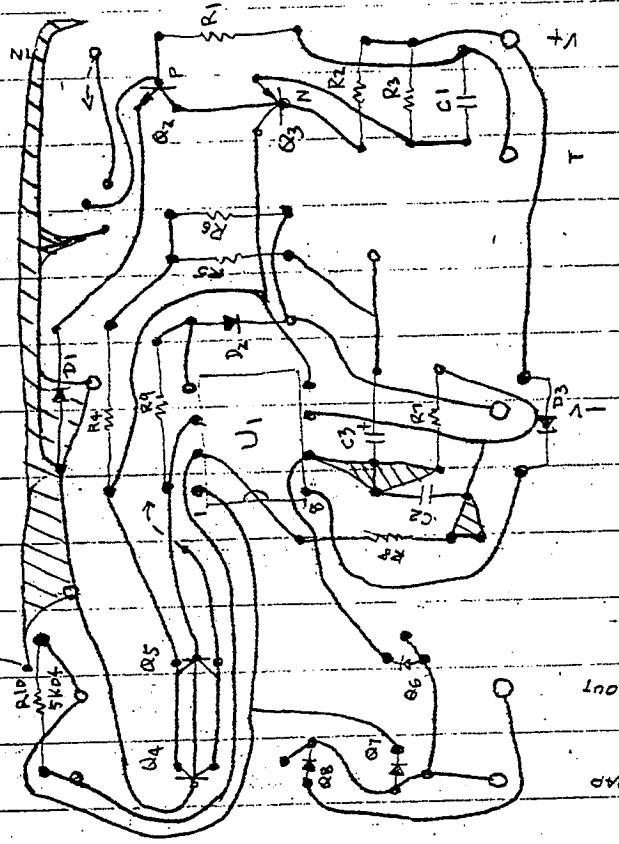
SOLDER SIDE

VCA 7.4 / 7.6

NI



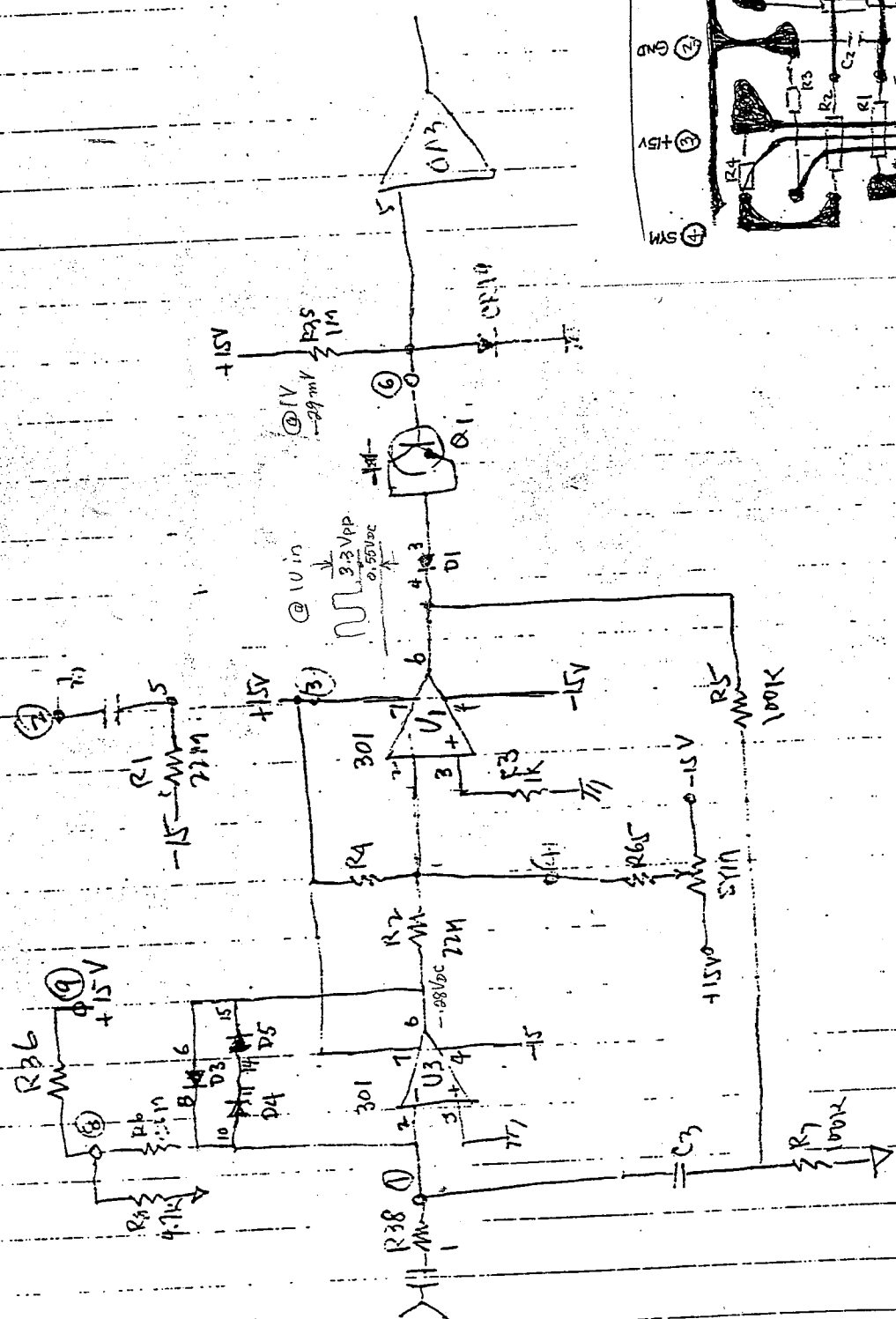
BOTTOM



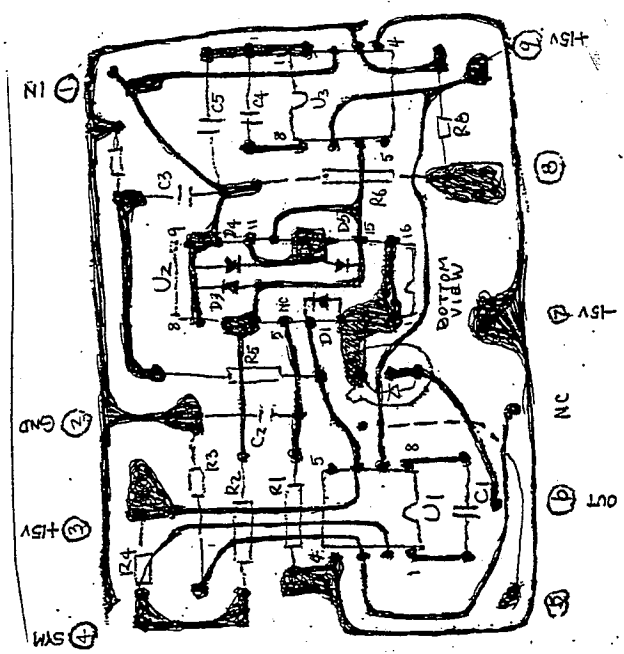
SM
CTRL
GND

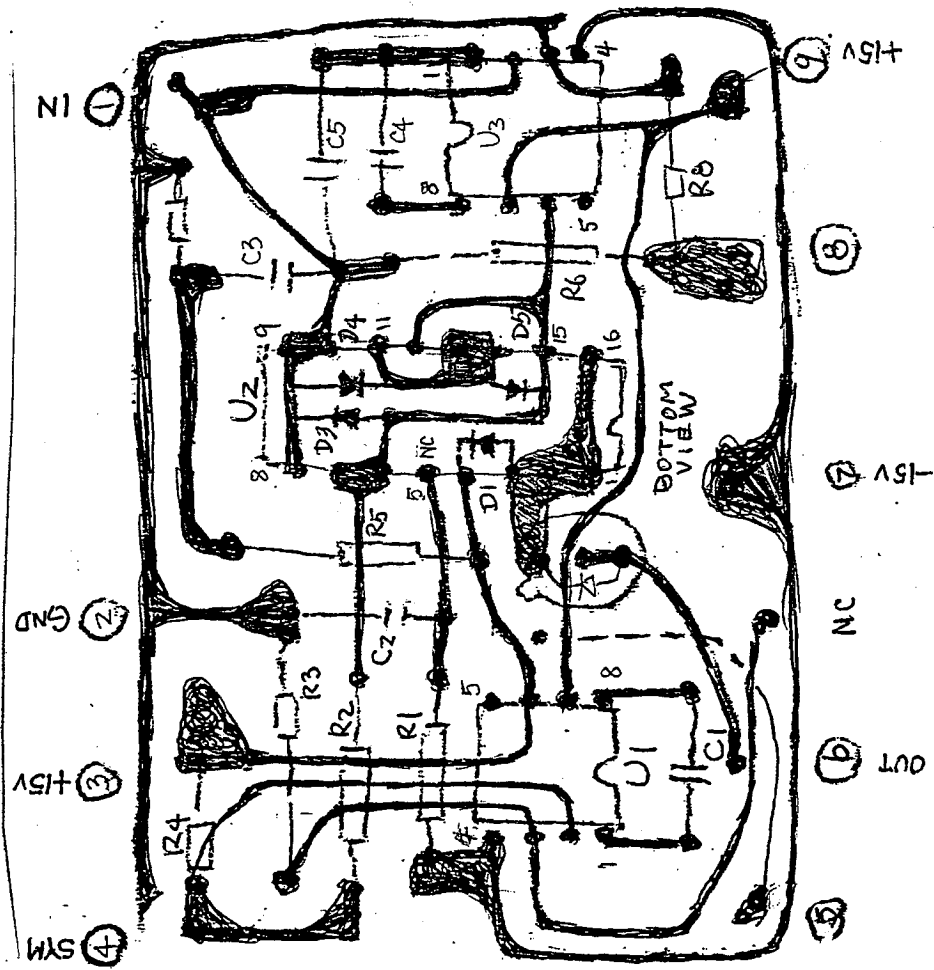
GAP
OUT

Q ?

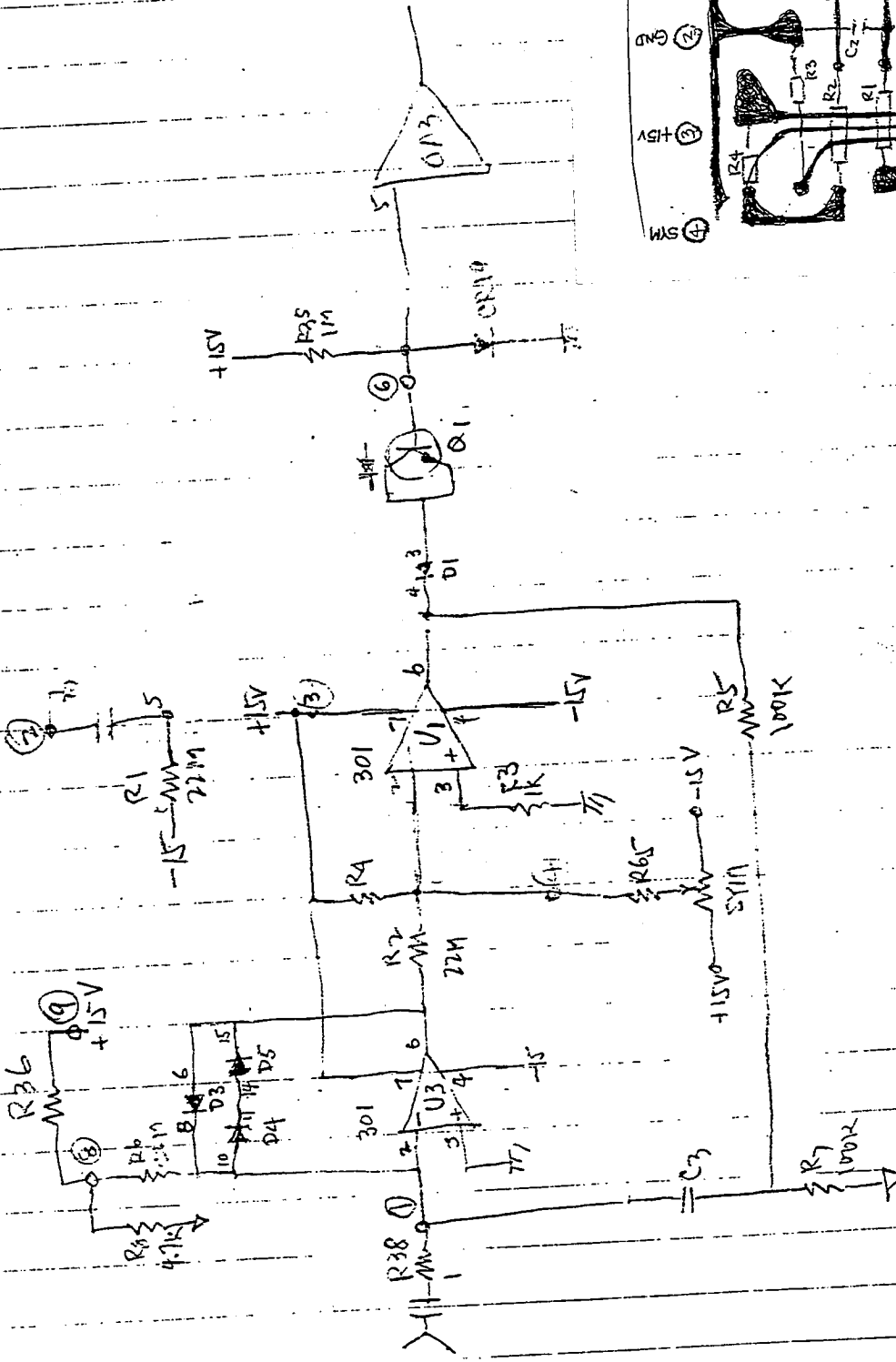


208 RMS

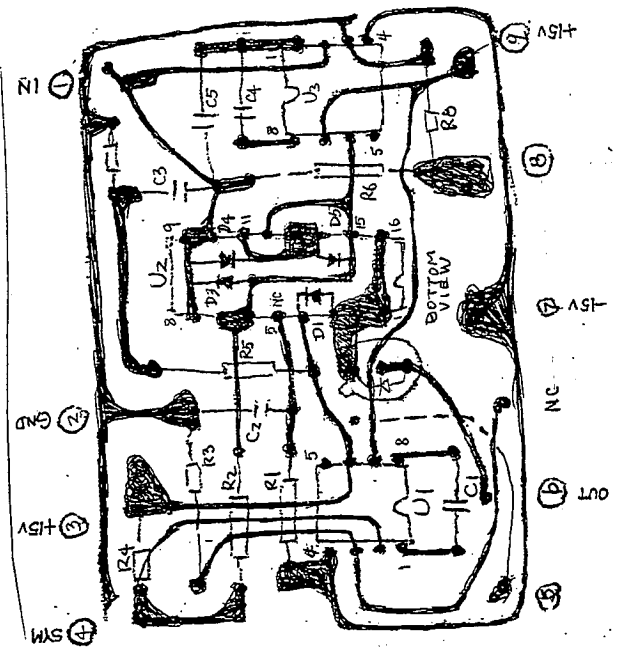


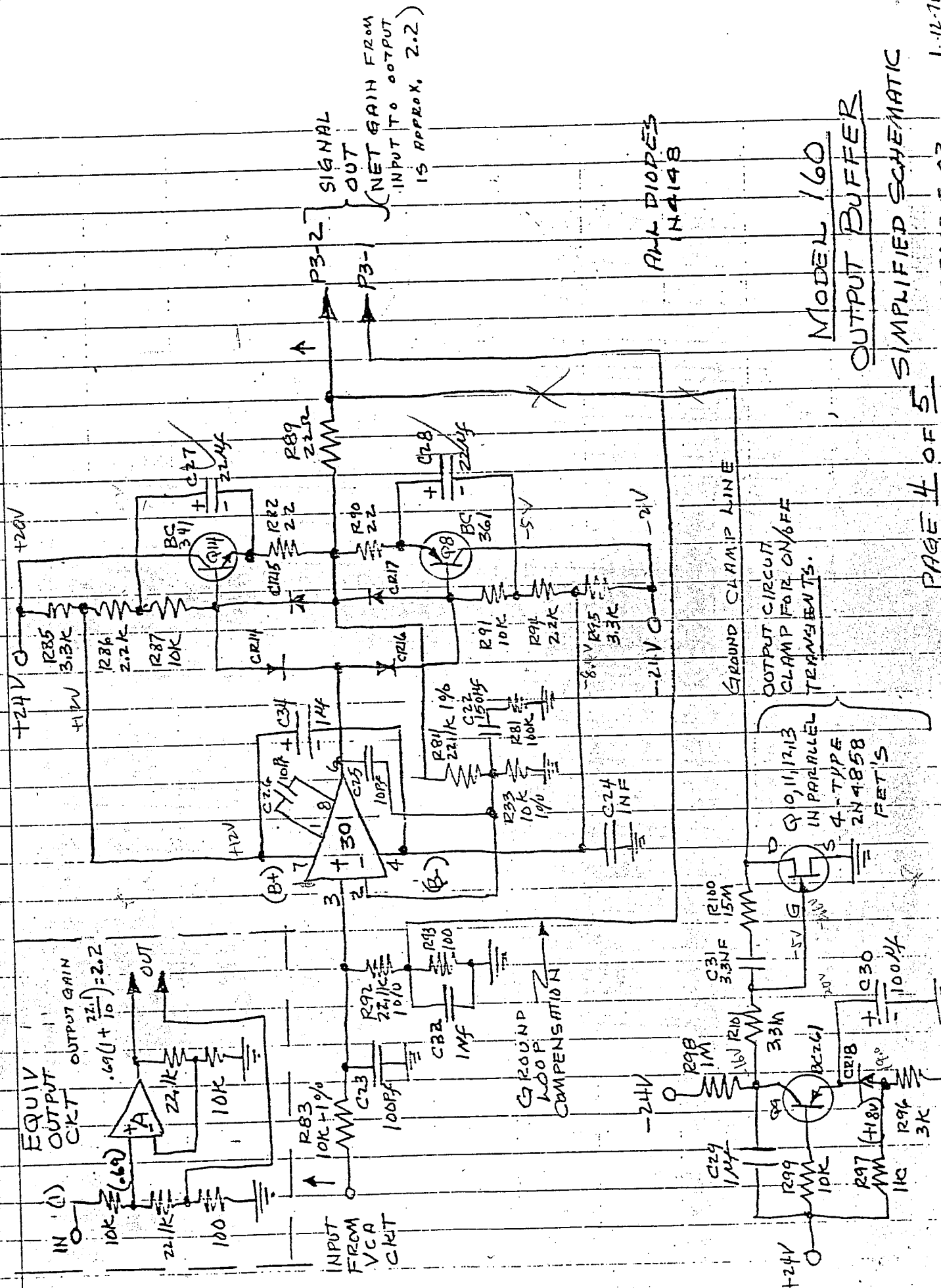


20B



208 RMS





EQUIV
OUTPUT
CKT

OUTPUT GAIN
 $.69(1 + \frac{22k}{10}) = 2.2$

GROUND
LOOP
COMPENSATION

SIGNAL
OUT
(NET GAIN FROM
INPUT TO OUTPUT
IS APPROX. 2.2)

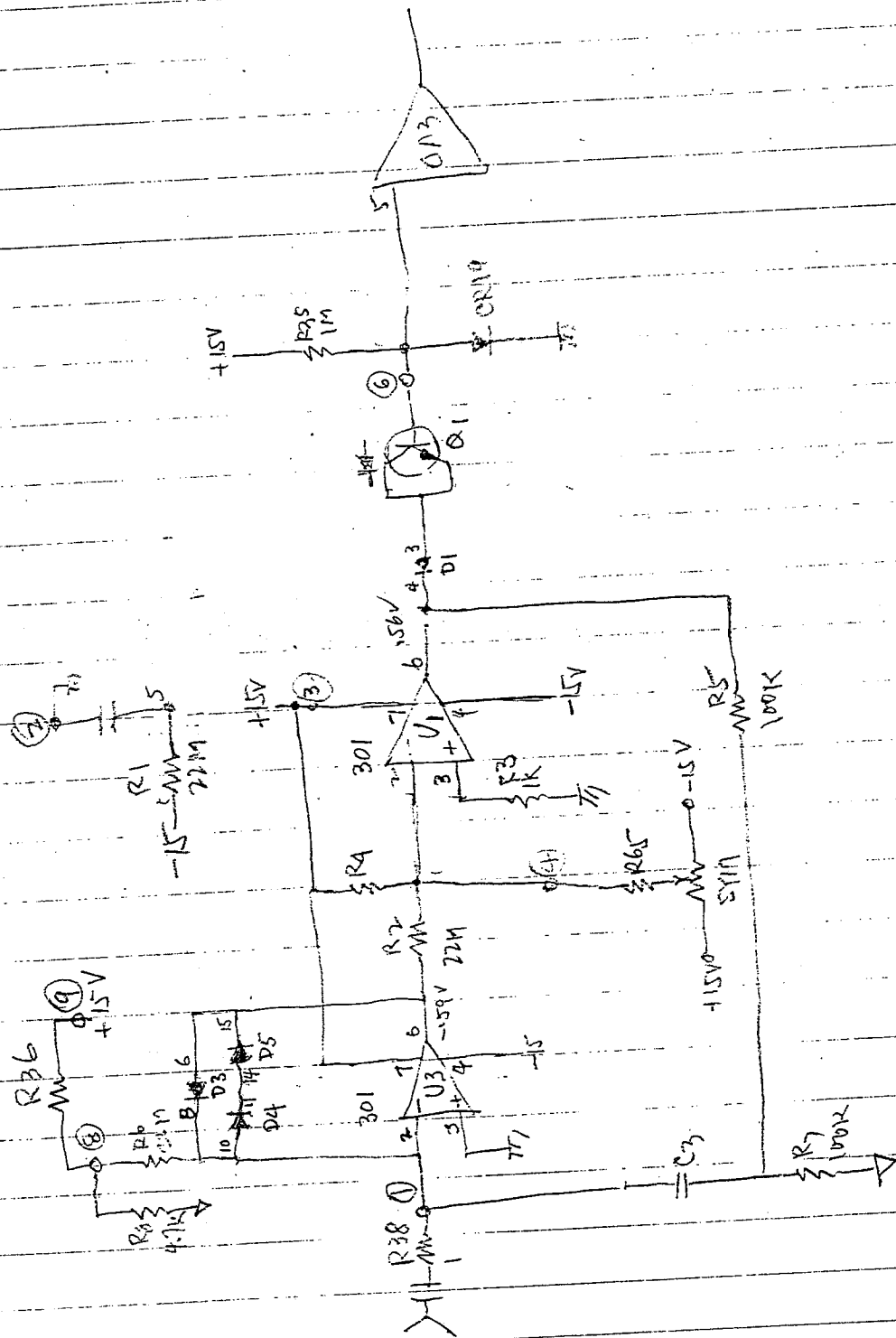
4N49B
DIODES

MODEL 160
OUTPUT BUFFER

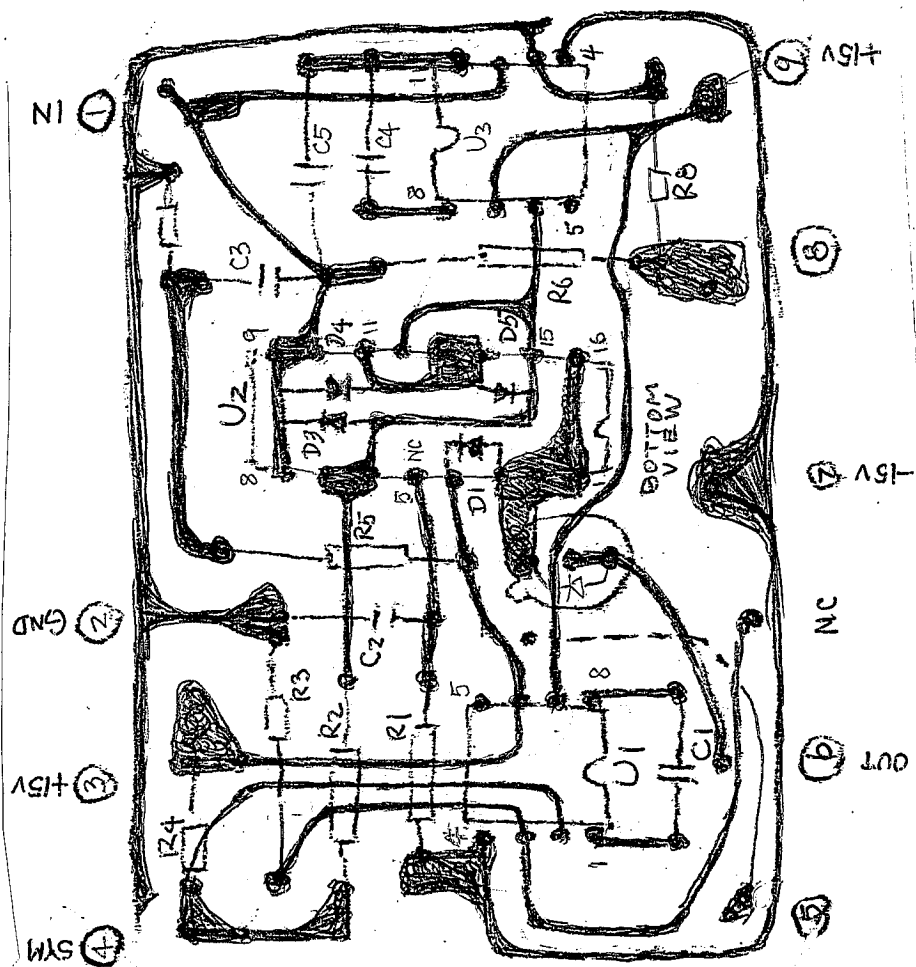
SIMPLIFIED SCHEMATIC

GROUND CLAMP LINE
OUTPUT CIRCUIT
CLAMP FOR ON/OFF
TRANSIENTS.

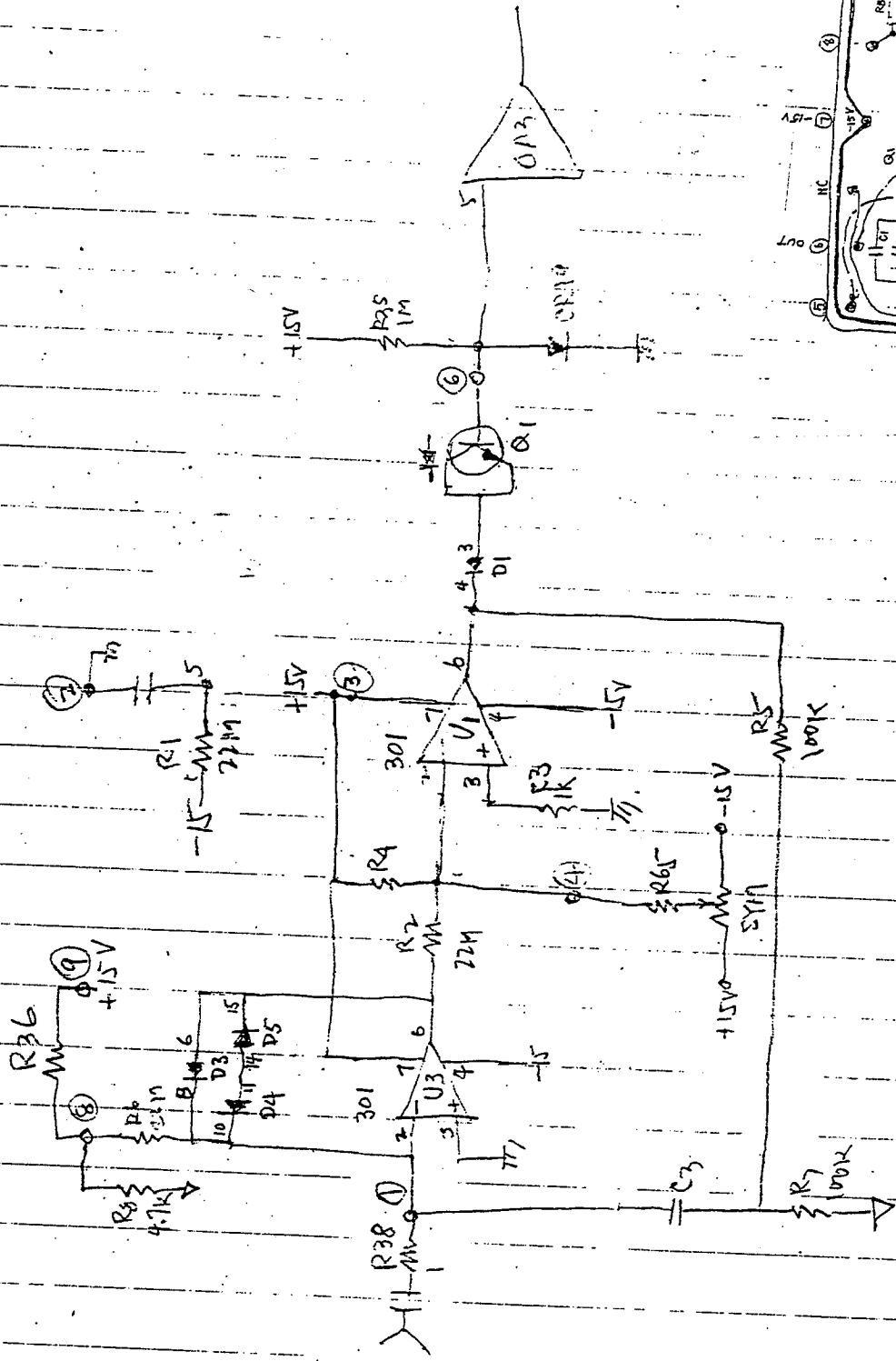
Q 011213
IN PARALLEL
4-TYPE
2N4858
FET'S



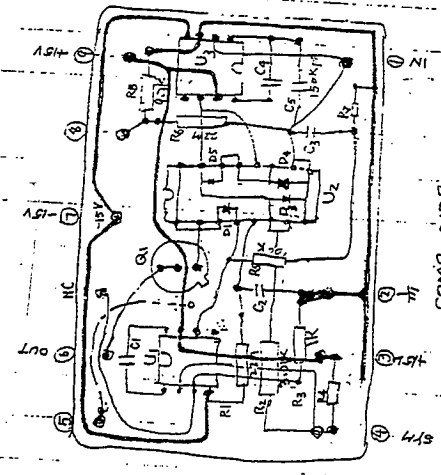
208 RMS



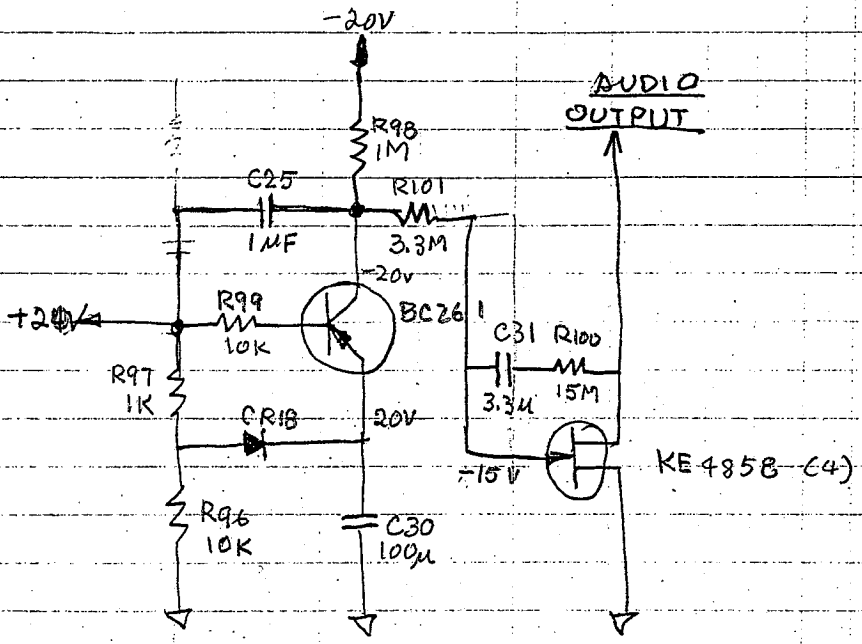
208



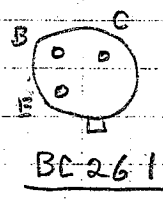
208 RMS



160



METER: PLUKE 8050A



BC261